

# GoLogic™

# U72-2M

*"Your Eyes into the Digital World"*

**The PC-Hosted Logic Analyzer that's powerful, affordable and easy to use.**

### **Ultra-Compact Logic Analyzer**

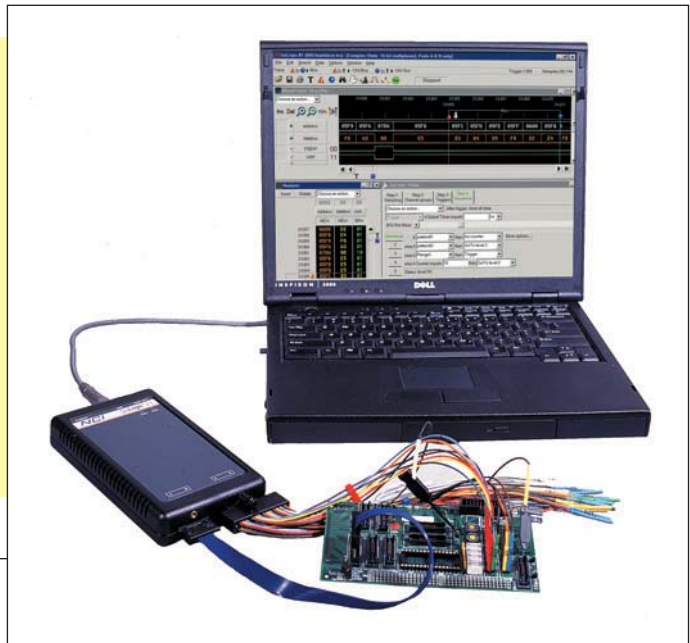
(6.3 in. x 3.75 in. x 1.3 in.) only 14 oz.  
Works with laptops or desktops. USB 2.0 and 1.1 interface. Carrying case included.

### **Packed with power**

72 Channels @ **250MHz** timing  
36 Channels @ **500MHz** timing  
71 Channels @ **125MHz** state (synchronous)  
72 Channels @ **125MHz** transitional timing

### **Deep Memory**

72 Channels **2 Meg** samples/channel  
36 Channels **4 Meg** samples/channel



### **ScopeLink™**

Trigger DSO and view waveforms.  
ScopeLink included for mixed signal analysis.

### **Flexible Clocking**

Clock in normal or transitional timing modes. State mode allows for clocking on a single edge or multiple edges and multiplexed busses.

### **Convenient Setup**

Single Setup window. Simple setup mode permits the occasional user to run with minimal effort.

### **Internet accessible**

The GoLogic may be operated over the internet or any LAN using TCP/IP.

### **Portable**

Weighs 14 oz. (410 grams)

### **Disassemblers and Custom Data Analysis**

8051, Zx80, 80x86, 68x0 disassembly. The Software Development Kit is included for custom applications. C/C++ source display is available.

### **Extensive Triggering Capabilities**

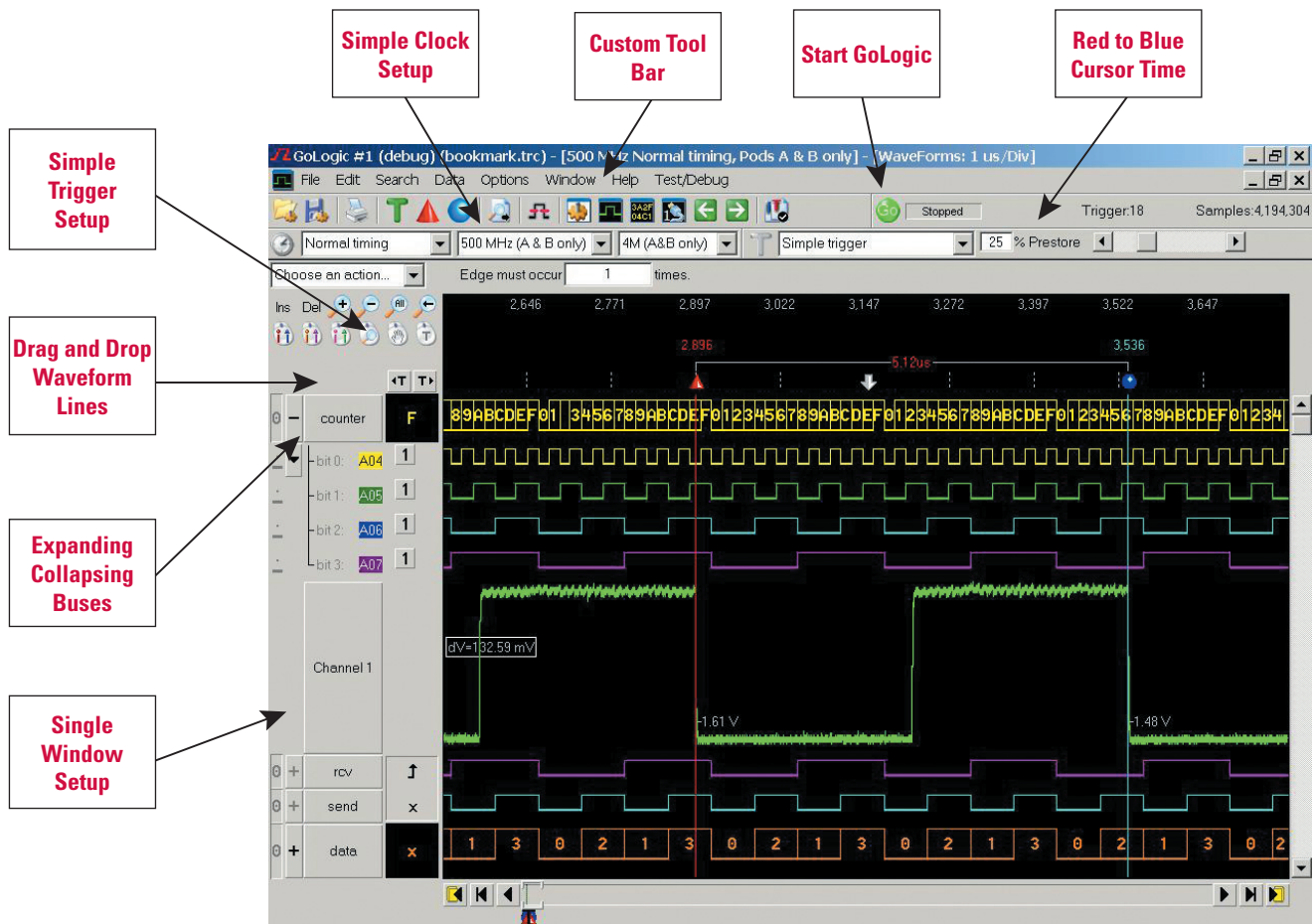
Trigger on patterns, edges or ranges. Store only data of interest. 8 Sequence levels with counters and timers. 8 trigger levels and 8 unique patterns. Edge and range triggers. Trigger on source code included.

### **Serial Bus Analysis**

CAN, LIN, I2C, SPI, RS232/UART and generic serial analysis included.

**NCI** Logic Analyzers

6352 University Drive • Huntsville, AL 35806 • Phone (256) 837-6667 • FAX (256) 837-5221  
website: <http://www.nci-usa.com> • e-mail: [sales@nci-usa.com](mailto:sales@nci-usa.com)



## GoLogic Specifications

Trigger patterns	8	Sequence levels	8
Edge detectors	2	Sequence speed	125MHz
Range detectors (32-bits)	2	Counters per level	1 (20Bits)
State Clock Setup/Hold	2/0 ns fixed	Transitional timing resolution	8 ns
Operating temperature	0° to 50°C	Maximum time stamp@125MHZ	34.4 seconds

## Input characteristics

Input Resistance	240K	Threshold Range	-4.9V to +5.27V in 40mV steps
Maximum Input Volts	+/-30V	Minimum Input Voltage Swing	600mV peak to peak

- View scope and analyzer data together
- Operates off of a 12V car battery
- View comparison of trace and reference data
- Trigger scopes from the logic analyzer

*Prices and Specifications subject to change without notice.*

## GoLogic U72-2M \$5500.00

*(Price includes logic analyzer with leads, power supply, USB cable, scope link trigger cable, carrying case, software, and manual). Software updates are free.*



6352 University Drive • Huntsville, AL 35806 • Phone (256) 837-6667 • FAX (256) 837-5221  
 website: <http://www.nci-usa.com> • e-mail: [sales@nci-usa.com](mailto:sales@nci-usa.com)