

GoLogic™

U72-1M

"Your Eyes into the Digital World"

The PC-Hosted Logic Analyzer that's powerful, affordable and easy to use.

Ultra-Compact Logic Analyzer

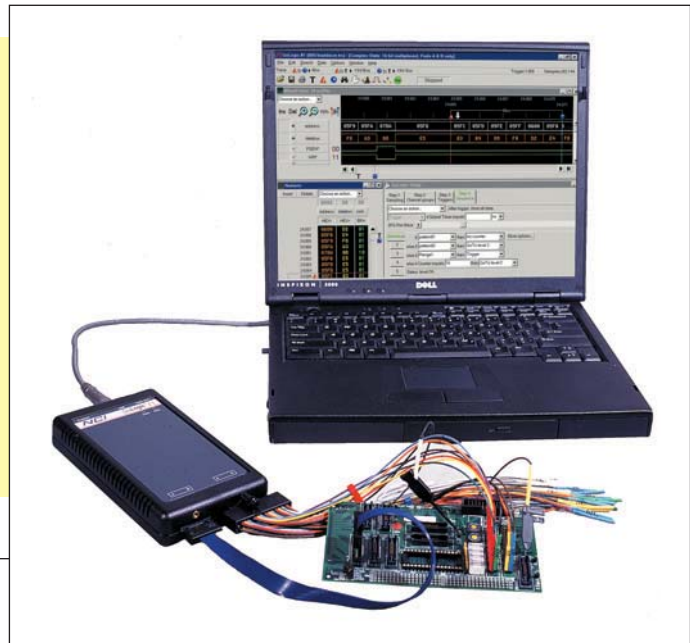
(6.3 in. x 3.75 in. x 1.3 in.) only 14 oz.
Works with laptops or desktops. USB 2.0 and 1.1 interface. Carrying case included.

Packed with power

72 Channels @ **250MHz** timing
36 Channels @ **500MHz** timing
71 Channels @ **125MHz** state (synchronous)
72 Channels @ **125MHz** transitional timing

Deep Memory

72 Channels **1 Meg** samples/channel
36 Channels **2 Meg** samples/channel



ScopeLink™

Trigger DSO and view waveforms.
ScopeLink included for mixed signal analysis.

Flexible Clocking

Clock in normal or transitional timing modes. State mode allows for clocking on a single edge or multiple edges and multiplexed busses.

Convenient Setup

Single Setup window. Simple setup mode permits the occasional user to run with minimal effort.

Internet accessible

The GoLogic may be operated over the internet or any LAN using TCP/IP.

Portable

Weighs 14 oz. (410 grams)

Disassemblers and Custom Data Analysis

8051, Zx80, 80x86, 68x0 disassembly. The Software Development Kit is included for custom applications. C/C++ source display is available.

Extensive Triggering Capabilities

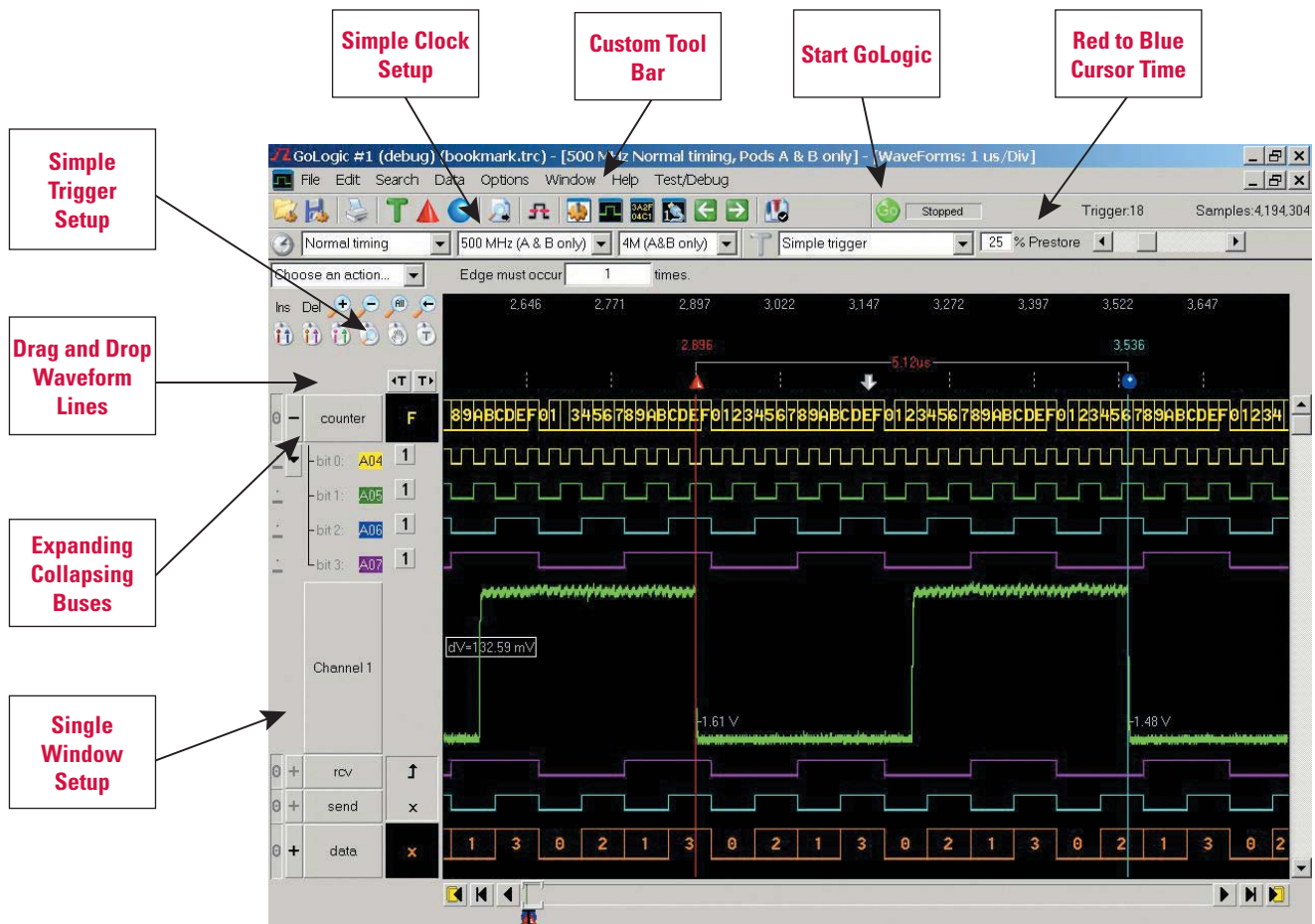
Trigger on patterns, edges or ranges. Store only data of interest. 8 Sequence levels with counters and timers. 8 trigger levels and 8 unique patterns. Edge and range triggers. Trigger on source code included.

Serial Bus Analysis

CAN, LIN, I2C, SPI, RS232/UART and generic serial analysis included.

NCI Logic Analyzers

6352 University Drive • Huntsville, AL 35806 • Phone (256) 837-6667 • FAX (256) 837-5221
website: <http://www.nci-usa.com> • e-mail: sales@nci-usa.com



GoLogic Specifications

Trigger patterns	8	Sequence levels	8
Edge detectors	2	Sequence speed	125MHz
Range detectors (32-bits)	2	Counters per level	1 (20Bits)
State Clock Setup/Hold	2/0 ns fixed	Transitional timing resolution	8 ns
Operating temperature	0° to 50°C	Maximum time stamp@125MHZ	34.4 seconds

Input characteristics

Input Resistance	240K	Threshold Range	-4.9V to +5.27V in 40mV steps
Maximum Input Volts	+/-30V	Minimum Input Voltage Swing	600mV peak to peak

- View scope and analyzer data together
- Operates off of a 12V car battery
- View comparison of trace and reference data
- Trigger scopes from the logic analyzer

Prices and Specifications subject to change without notice.

GoLogic U72-1M \$4300.00

(Price includes logic analyzer with leads, power supply, USB cable, scope link trigger cable, carrying case, software, and manual). Software updates are free.



6352 University Drive • Huntsville, AL 35806 • Phone (256) 837-6667 • FAX (256) 837-5221
 website: <http://www.nci-usa.com> • e-mail: sales@nci-usa.com